

# TALBOTTON RD TO 23RD ST

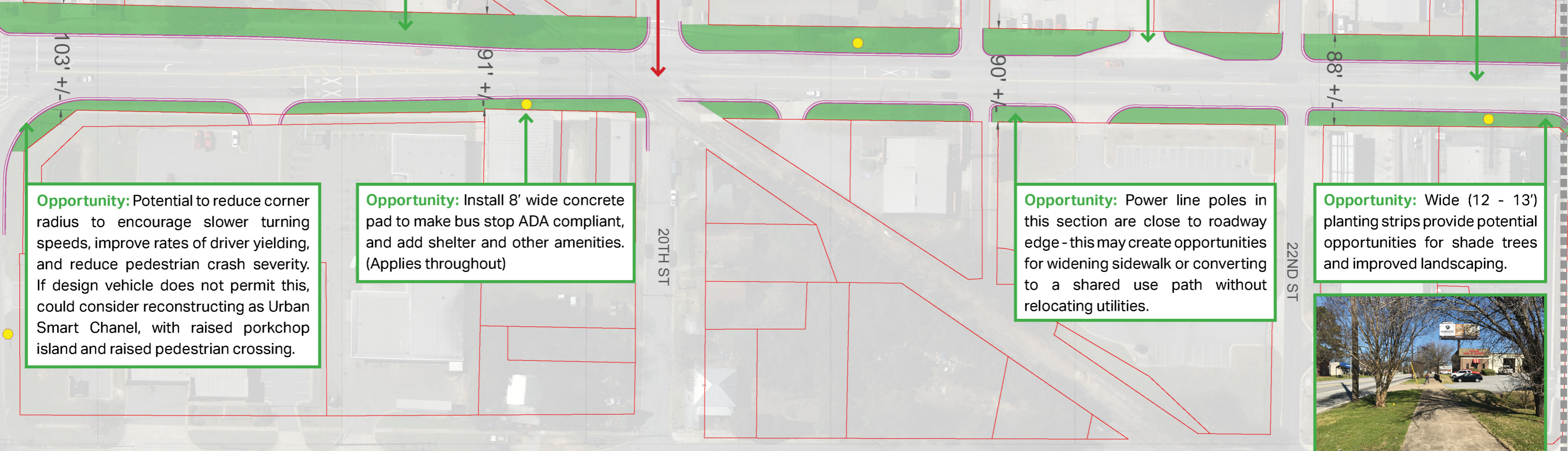


**Opportunity:** Existing planting strip on west side looks like it's 6', which is wide enough for street trees.

**Constraint:** Skewed railroad track crossing creates potential challenges for bicyclists and pedestrians using mobility aids.

**Opportunity:** Reconstruct curb cut to discourage high speed entrance/exit across pedestrian crossing.

**Opportunity:** Existing travel lanes look to be 12' wide. If lane widths were reduced to 10', that would provide enough space for 5' bike lanes on both sides of the street. (At least in the 5-lane sections)



**Opportunity:** Potential to reduce corner radius to encourage slower turning speeds, improve rates of driver yielding, and reduce pedestrian crash severity. If design vehicle does not permit this, could consider reconstructing as Urban Smart Chanel, with raised porkchop island and raised pedestrian crossing.

**Opportunity:** Install 8' wide concrete pad to make bus stop ADA compliant, and add shelter and other amenities. (Applies throughout)

**Opportunity:** Power line poles in this section are close to roadway edge - this may create opportunities for widening sidewalk or converting to a shared use path without relocating utilities.

**Opportunity:** Wide (12 - 13') planting strips provide potential opportunities for shade trees and improved landscaping.



**LEGEND**

- R.O.W. OPPORTUNITIES
- R.O.W. CONSTRAINTS
- POTENTIAL GATEWAY
- FUTURE CONNECTION
- BUS STOP

0 50 100 200 ft

N